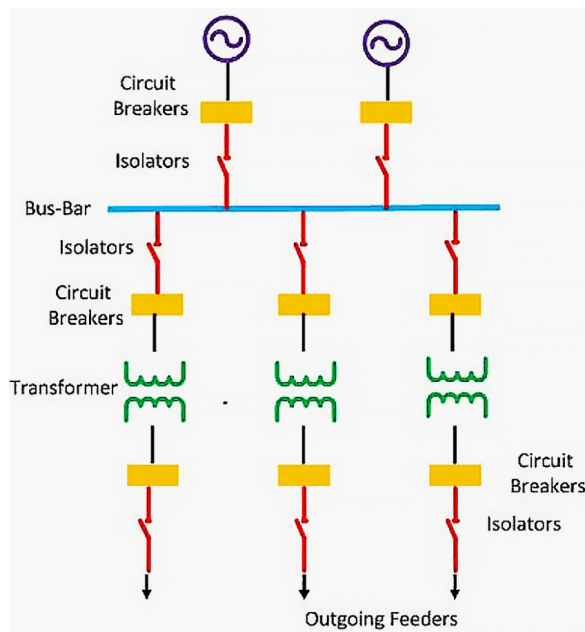


14(MW) Substation With just 5000 sq ft of space.

Select output voltage 1250V 1140V 480V 380V 240V 230V 220V.

Distribution substations typically operate at 11KV/0.4KV voltage levels and deliver electric energy directly to industrial and residential consumers. Note that distribution voltage level may vary in countries worldwide.

- Voltage in Parallel Circuits**
Definition: A parallel circuit is defined as one where multiple devices are connected side by side, each in its own branch, with the same voltage across each branch.
- Current Distribution:** The total current in a parallel circuit is the sum of the currents through each branch, allowing multiple paths for current flow.
- Resistance Calculation:** In parallel circuits, adding more branches decreases the overall resistance, making it easier for the current to flow.



- How to Add Voltage in Parallel:**
 The voltage across each device in a parallel circuit is equal to the source voltage, ensuring consistent voltage across all branches.
- Advantages and Applications:**
 Parallel circuits are used in homes and various applications because they allow independent operation, full voltage to each device, and isolate faults effectively.

