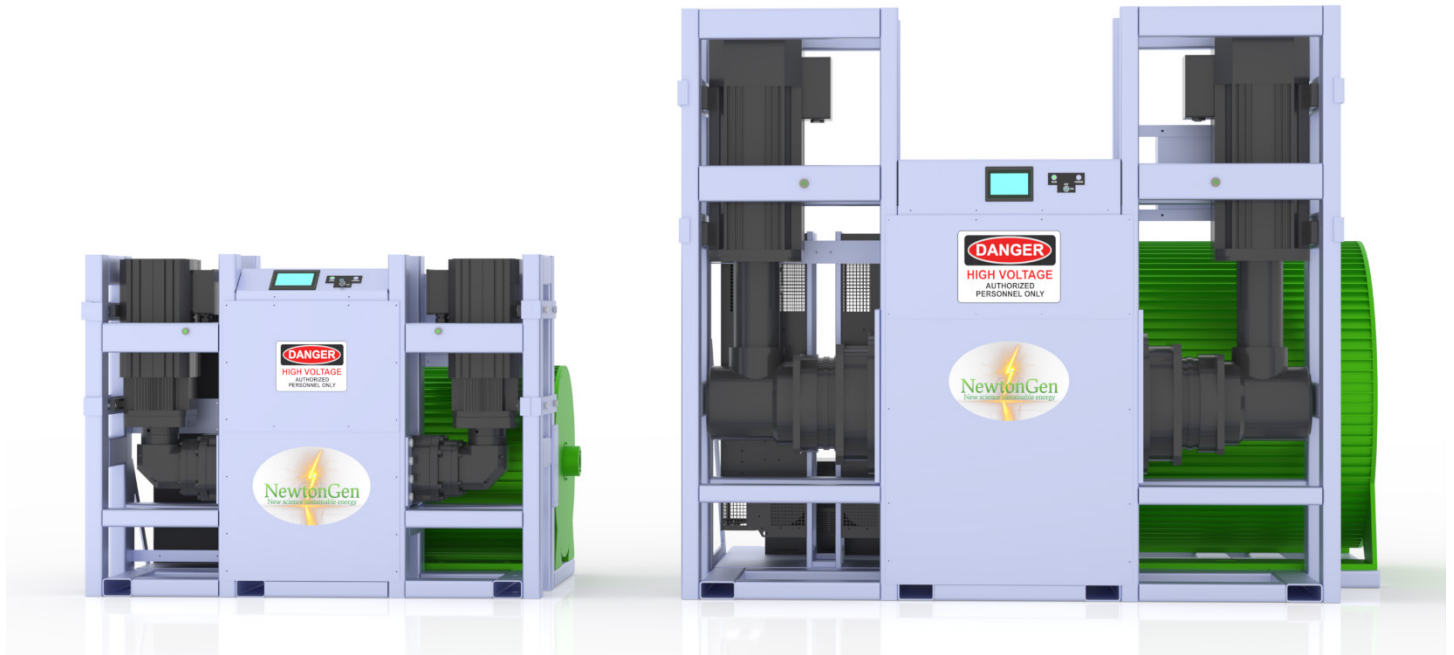
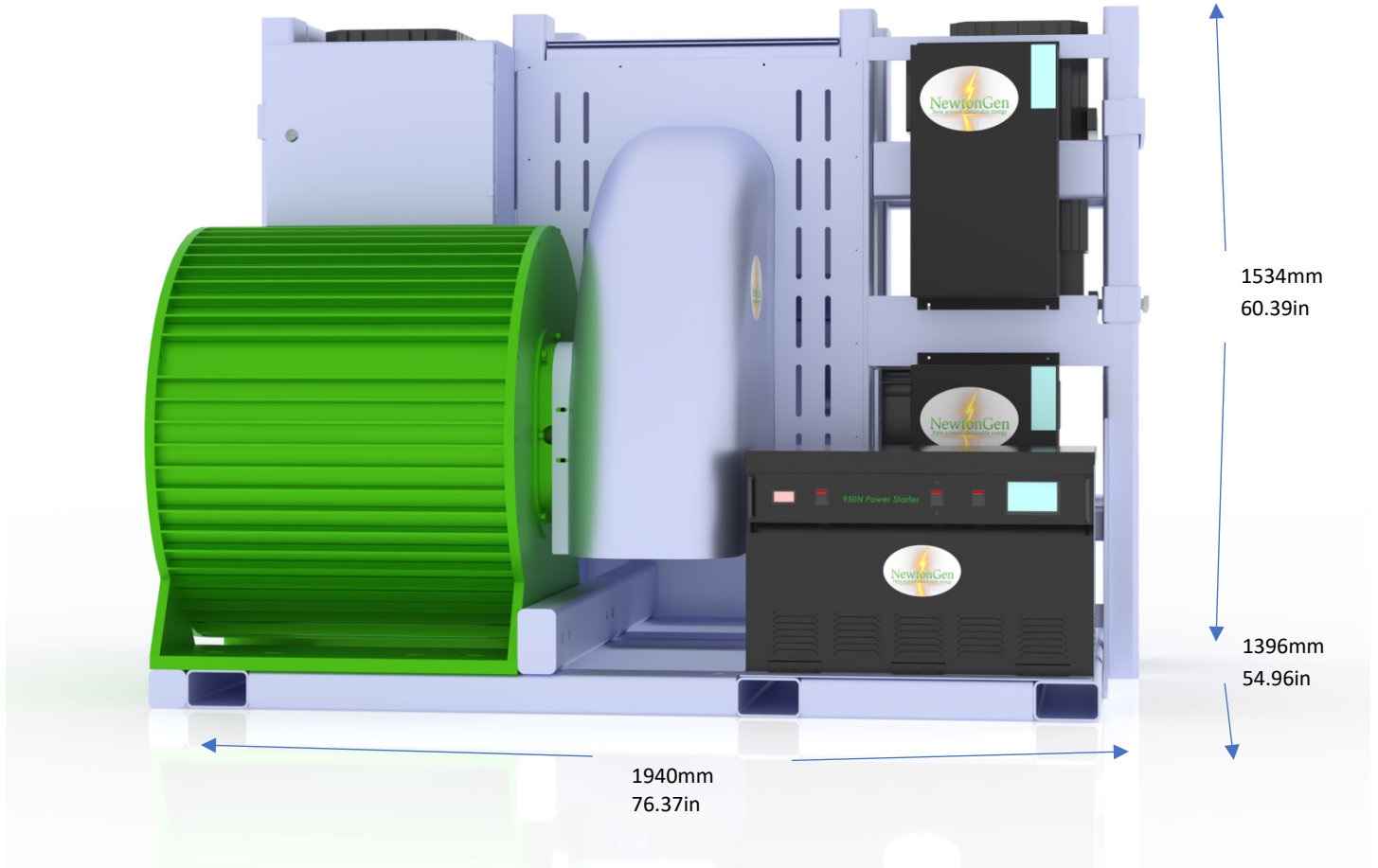




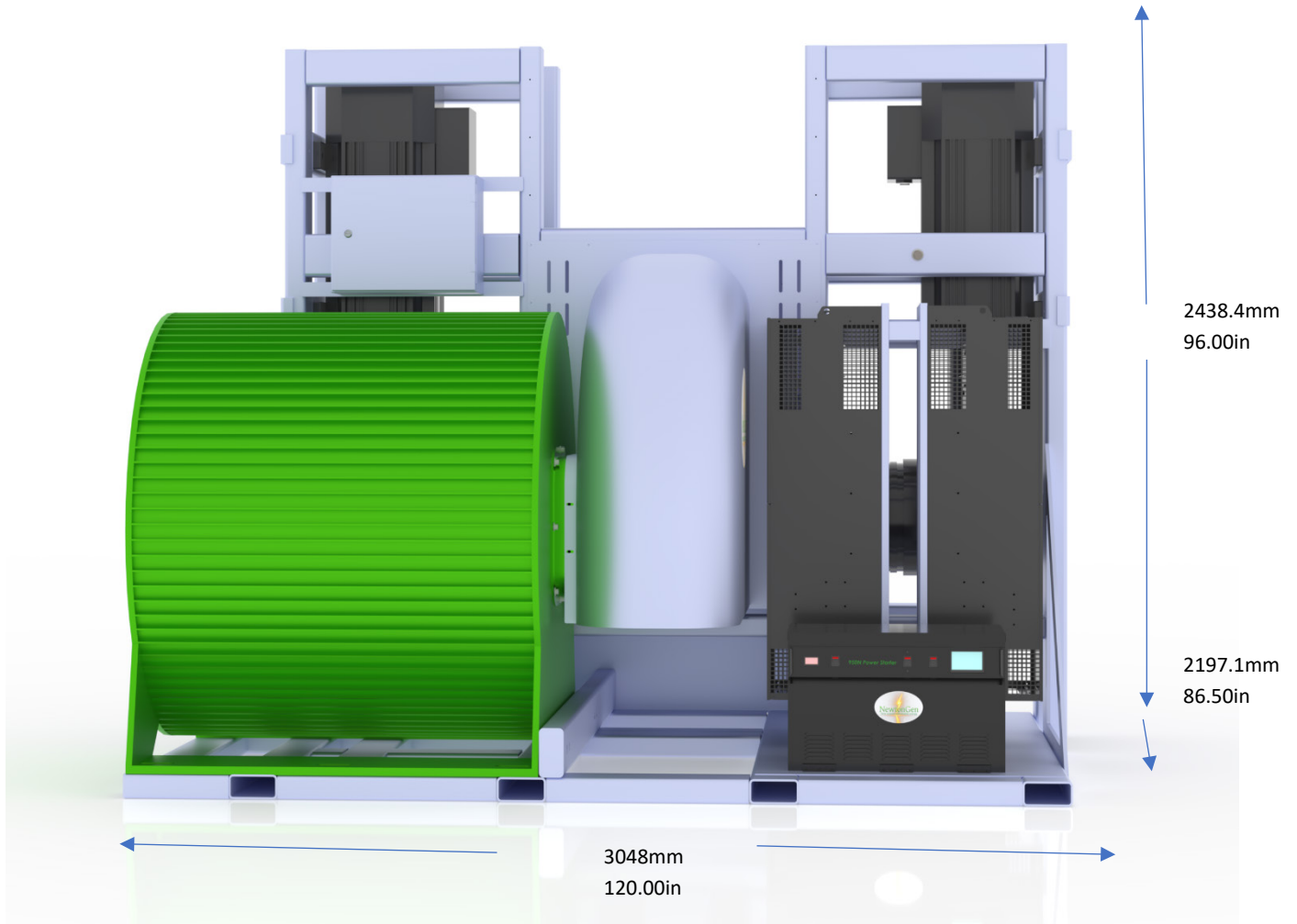
NewtonGen AI-100kW and AI-500kW



NewtonGen is a new science system for sustainable energy. Press the start button. Primary power will be ready in 30 seconds. It includes a three-year warranty. The warranty is unconditional. It needs no external energy. The system delivers electricity 24/7. This powers data mining, EV charging, Role in modern utilities' energy systems, powering homes and businesses. It works indoors or outdoors. The system is 28.50 to 70.83 square feet. It produces 100kW or 500kW of power.



NewtonGen AI-100kW



NewtonGen AI-500kW

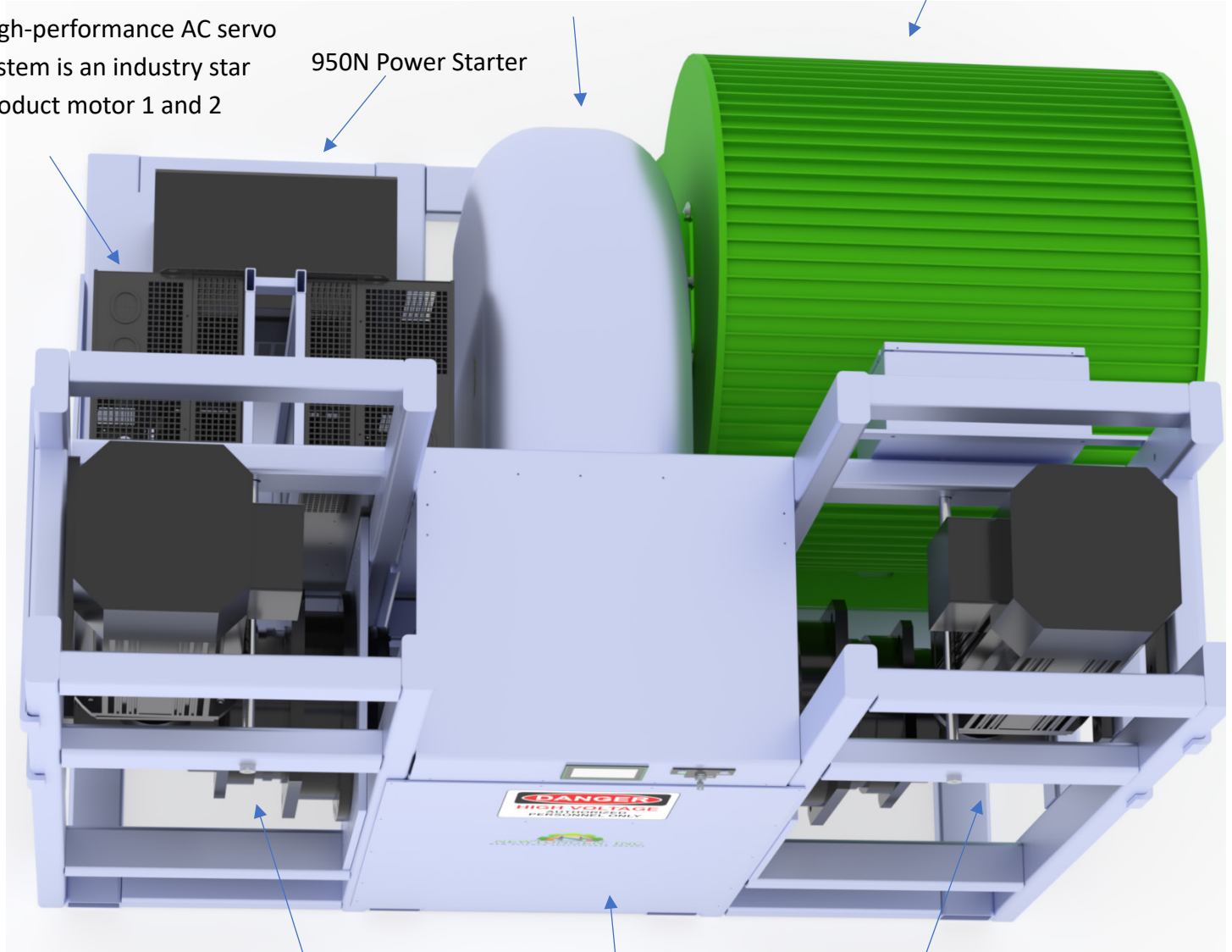


PUSH&PULL Drivetrain is designed to ensure best energy performance

140KW 480V or 500kW 690V
200rpm 60hz Axial flux Permanent

High-performance AC servo system is an industry star product motor 1 and 2

950N Power Starter



Imperial/Mechanical horsepower:

56.3229180636

hp(I)

Electrical horsepower:

56.3002680965

hp(E)

Metric horsepower:

57.104010877

hp(M)

Calculation steps:

42kw / 0.7457

= 56.3229180636hp(I)

42kw / 0.746

= 56.3002680965hp(E)

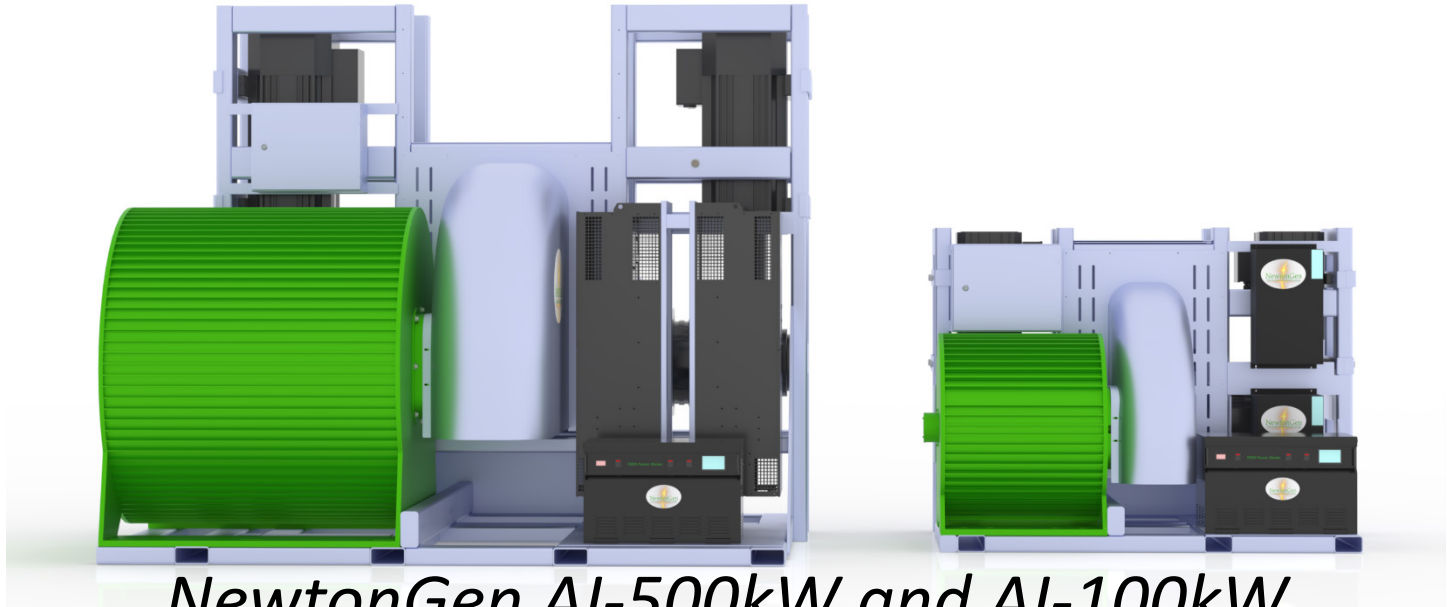
42kw / 0.7355

= 57.104010877hp(M)

PLC advanced machine automation with Energy management meters offering a range of communication Serial, Ethernet, CANopen, USB and 4G LTE.

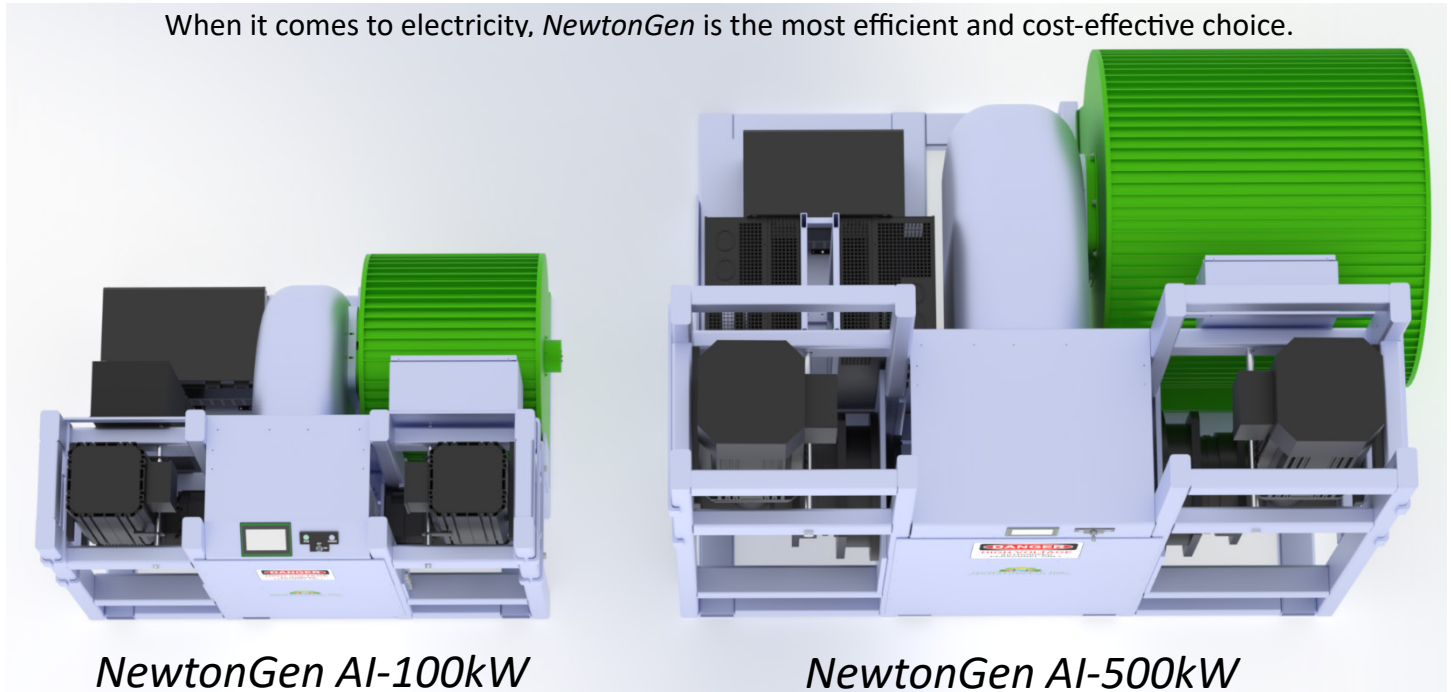
100kW uses Dual 57 horsepower Servo Motor and gearbox

500kW uses Dual 295 horsepower Servo Motor and gearbox



NewtonGen AI-500kW and AI-100kW

The principles of *NewtonGen* mean that nuclear, fossil fuels, hydro, wind, and solar power are unnecessary. When it comes to electricity, *NewtonGen* is the most efficient and cost-effective choice.



NewtonGen AI-100kW

NewtonGen AI-500kW

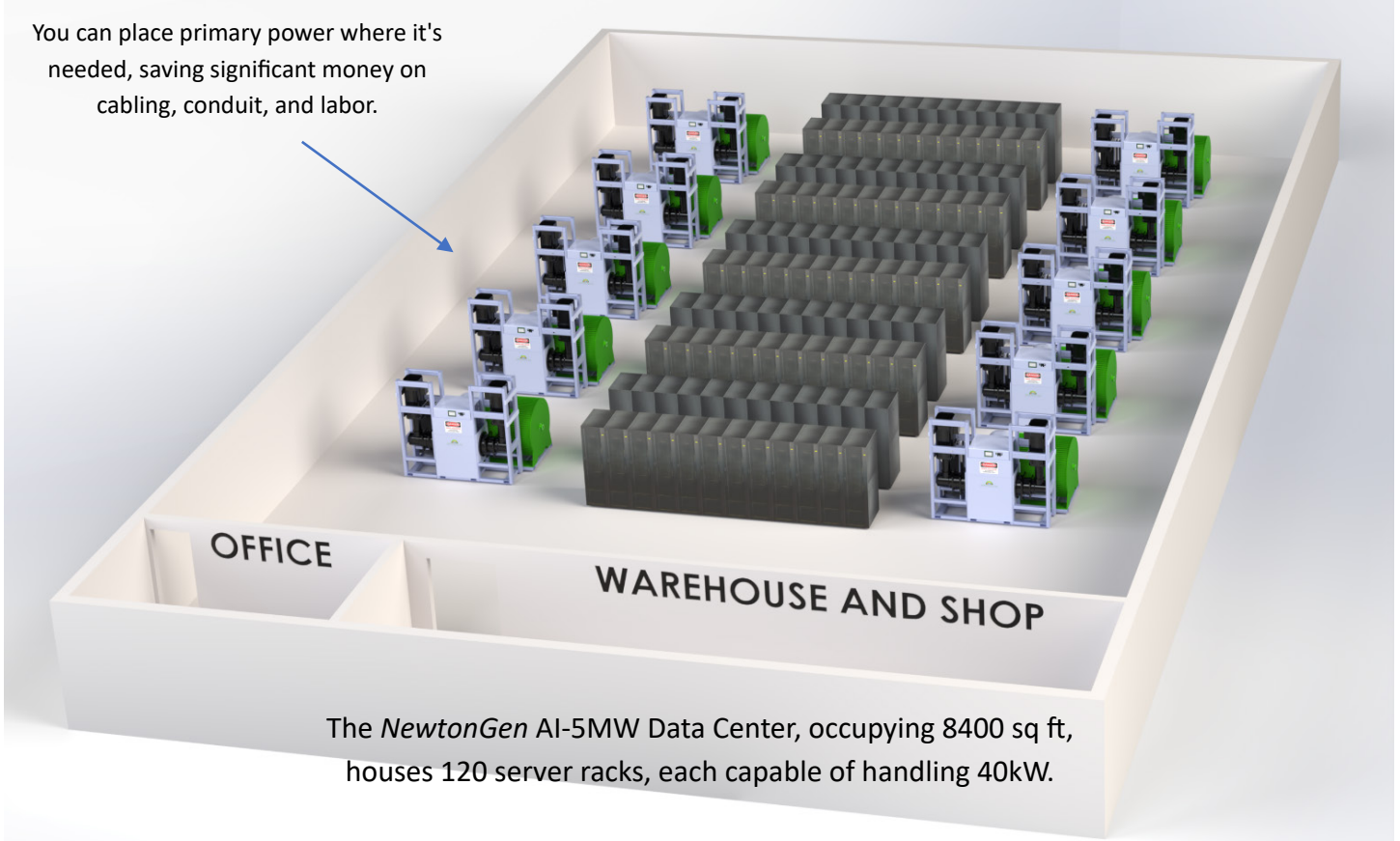


NewtonGen AI-1.5MW portable 40ft high cube shipping container available in 690V or 1250V

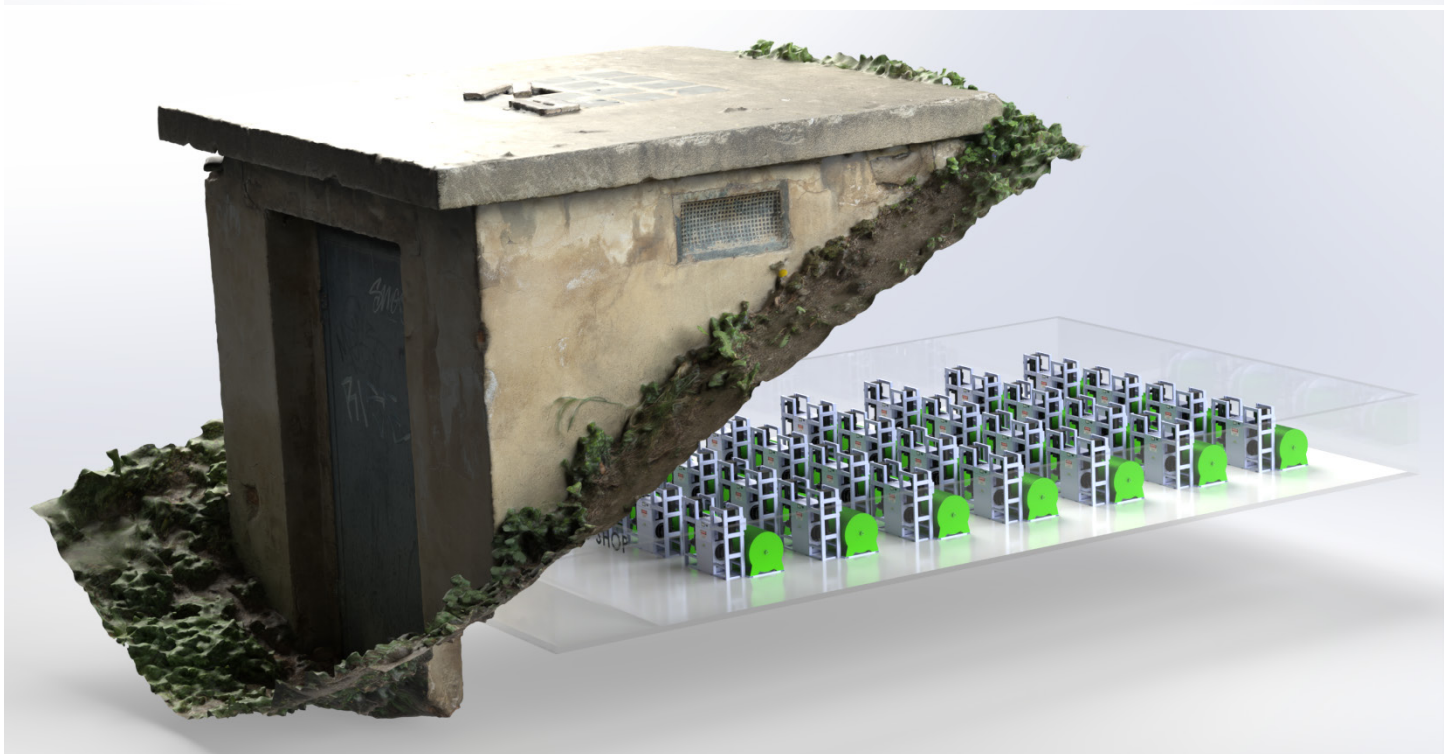




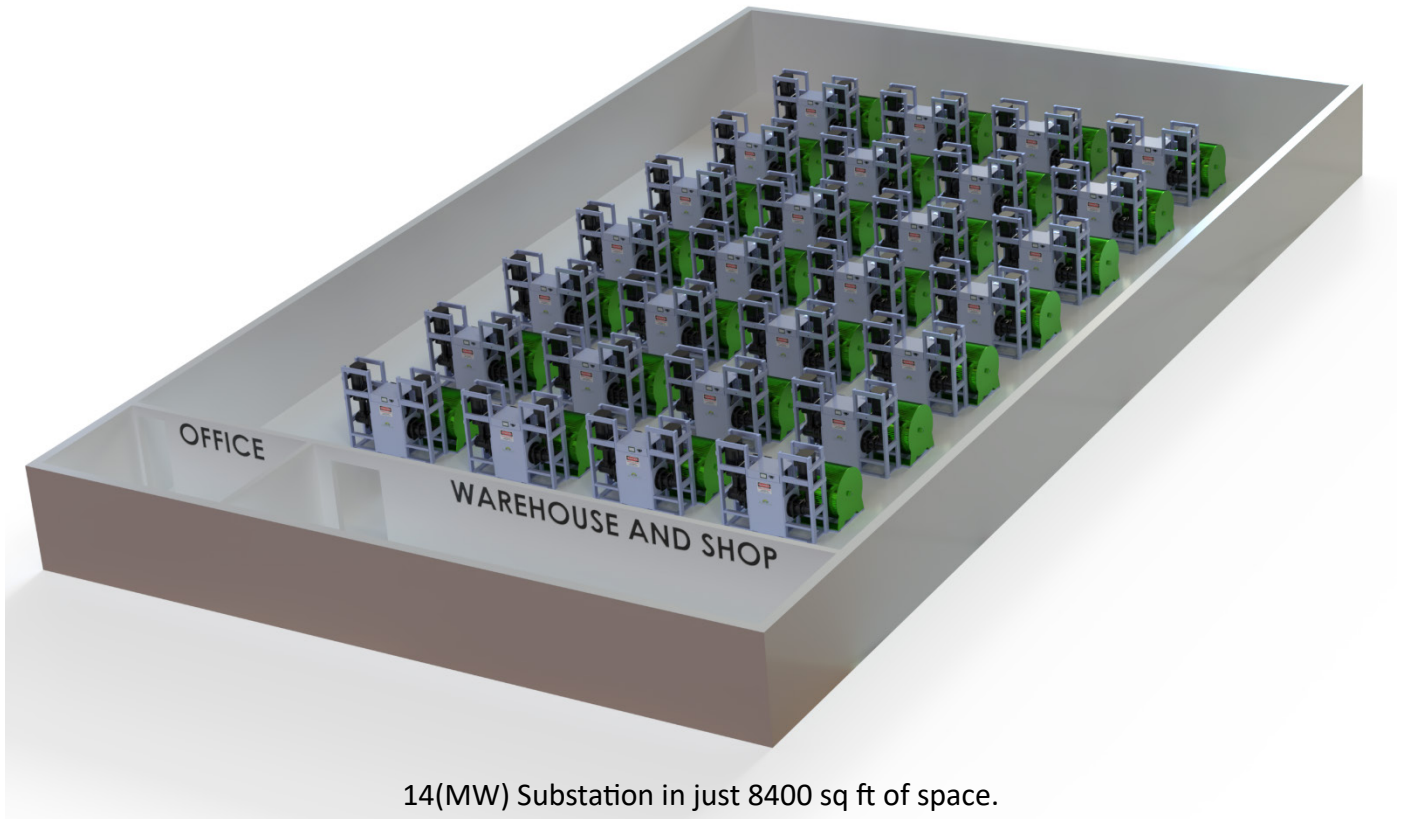
You can place primary power where it's needed, saving significant money on cabling, conduit, and labor.



The *NewtonGen* AI-5MW Data Center, occupying 8400 sq ft, houses 120 server racks, each capable of handling 40kW.



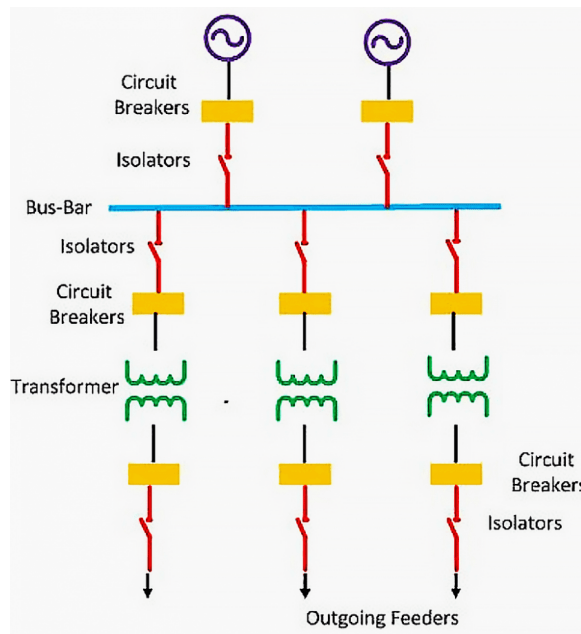
The *NewtonGen* AI-14MW in 8400 sq ft, underground bunker.



14(MW) Substation in just 8400 sq ft of space.
 Select output voltage 1250V 690V.

Distribution substations typically operate at 11KV/0.4KV voltage levels and deliver electric energy directly to industrial and residential consumers. Note that distribution voltage level may vary in countries worldwide.

- Voltage in Parallel Circuits**
Definition: A parallel circuit is defined as one where multiple devices are connected side by side, each in its own branch, with the same voltage across each branch.
- Current Distribution:** The total current in a parallel circuit is the sum of the currents through each branch, allowing multiple paths for current flow.
- Resistance Calculation:** In parallel circuits, adding more branches decreases the overall resistance, making it easier for the current to flow.



- How to Add Voltage in Parallel:**
 The voltage across each device in a parallel circuit is equal to the source voltage, ensuring consistent voltage across all branches.
- Advantages and Applications:**
 Parallel circuits are used in homes and various applications because they allow independent operation, full voltage to each device, and isolate faults effectively.